



2019 CEBU PROVINCE MINERAL PROFILE

Province: Cebu

Cities: 9

Municipalities: 44

Barangays: 1,203

Population: 4.6 Million (as of 2015 Census)

Major economic activities:

Industries and Services



GROSS OUTPUT

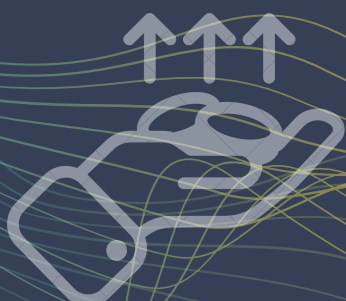
Php 14.9 Billion

Copper Concentrate, Gold, Silver, Limestone, and Dolomite.

Cebu province is poised to be the largest Copper Concentrate producer in the Philippines, with an output of 186,502 DMT valued at Php 11.36 Billion.

Gold (1,165 kilograms) and Silver (4,245 kilograms) are by-products of copper mining and processing which are valued at Php 2.72 Billion and Php 115.28 Million respectively.

Non-metallic minerals including limestone, marbleized limestone, aggregates, dolomite, greywacke, among others are value at Php 719.45 Million in 2019.



Mining Investment

Php 5.6 Billion

(estimated, as of December 2019)

EXPORT EMPLOYMENT

Php 17.9 Billion (2019)

4,501 employees

The total estimated export value of copper concentrate, gold and silver in 2019 is Php 17.58 Billion with China, Japan, Malaysia and India as its major trading partners.

For non-metallic exports such as processed dolomite, processed limestone and marbleized limestone, total export value is Php 276.56 Million with China, Taiwan, Japan, Indonesia and Australia.

This statistics shows the number of regular and contractual employees hired by the mining operators. However, employees of the contracting services have not been accounted yet.



TAXES AND FEES PAID

Php 1.89 Billion

The total contribution of mining contractors, operators, and exploration permit holders to the Philippine economy through the amount paid for income tax, excise tax on mineral, customs duties and fees, value added tax, local business tax, real property tax, community tax among other national and local taxes and withholding taxes.

MINERAL RESOURCES DEVELOPMENT PROJECTS

- 1 copper mine
- 3 limestone mine
- 1 marbleized limestone mine
- 1 andesite and basalt mine
- 3 mineral processing plants
- 15 industrial permits.

LAND AREA AND MINERAL POTENTIAL: 508, 839 hectares

Total land area of Cebu province

27.8 percent or 141,429 hectares Percentage of the province' total land area covered by mining tenements and mining application. This data is however subject to the mandatory relinquishment as provided by law.

SOCIAL DEVELOPMENT AND MANAGEMENT

Php 179.7 Million

Total amount committed by operating mines for the development of their host and neighboring communities through their approved Social Development and Management Program.

ENVIRONMENTAL PROTECTION AND REHABILITATION P36.6M and P122M

Amount committed by operating mines for the implementation of approved plans, programs, projects, activities under their Environmental Protection and Enhancement Program and Final Mine Rehabilitation and/or Decommissioning Plan for/as of 2019. The CLRF Steering Committee is still deliberating the FMRDF of 4 mining companies.

MINING FOREST PROGRAM

57,751 seedlings Planted by operating mines in over 85 hectares of land within and outside the mining area as of 2019.

